

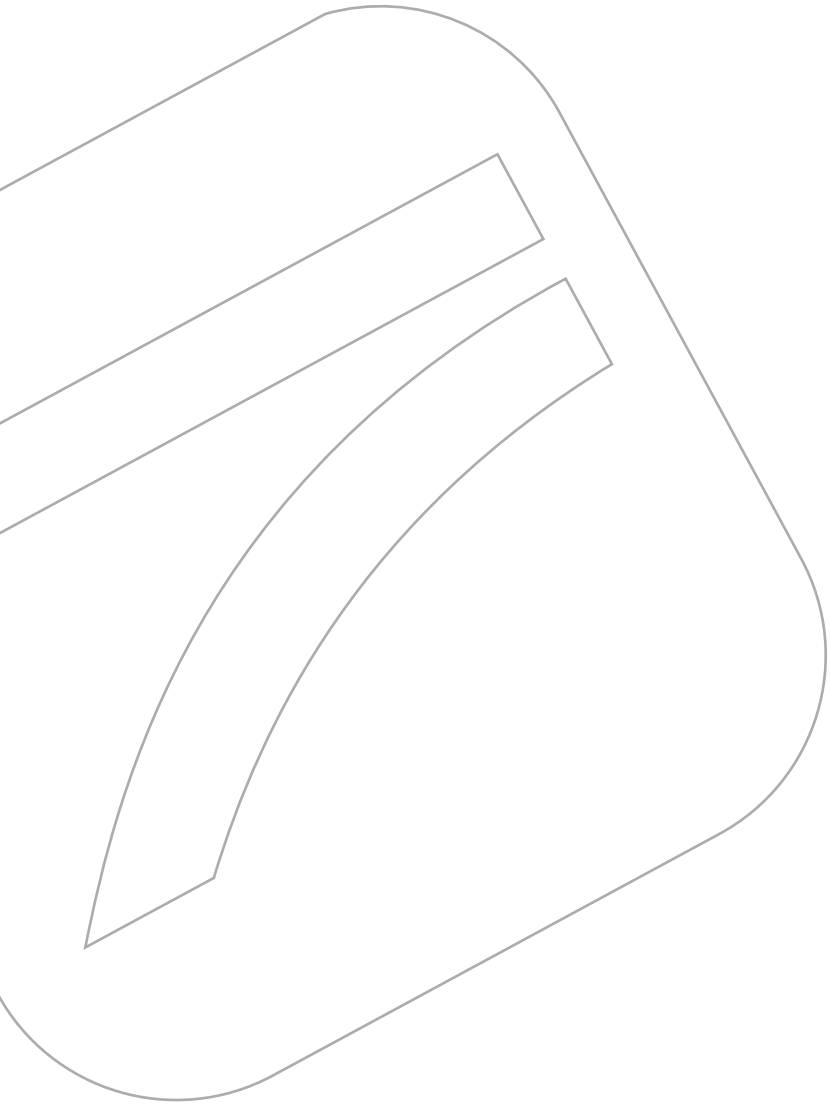


GENERAL CATALOGUE



G.COMM

2012



Dear Partner,

it is really a pleasure to welcome you on this new catalog.

For several years now our daily commitment has been focused on providing integrated solutions to dental lighting, support systems, micro motors and dental components, always keeping in mind innovation and usability as our guiding principles.

We are determined to continue on this direction and, to bear it in mind, we summed it in our company logo; the horizontal line, sharp and clear, represents the line of perfection, the ideal to be achieved, while the lower line symbolizes our daily effort to achieve the ideal.

We already started our journey on this line, we invite you to walk with us.

Giaffreda Nicola
C.E.O.



TABLE OF CONTENTS

Index

COMPANY PROFILE	6
History	7
Philosophy	8
Light gallery	9
Photo gallery	10
PRODUCTS	13
SALE CONDITIONS	84



DENTAL LED LIGHT	13
Polaris	14
DENTAL HALOGEN LIGHTS	17
Vision	18
Isa	20
APPLICATIONS	23
ARMS & SUPPORTS	27
Monitor arms	28
Tray arm	29
Assistant tray arm	30
Videocamera arm	31
Monitors	32
ELECTRIC MICROMOTORS	33
Micromotors ST40	34
Micromotor installation kit	36
ELECTRONIC BOARDS	37
Electronic &/or pneumatic control boards	38
Light electronic boards	39
INSTRUMENTS HOSES	41
Turbine hoses	42
Micromotor hoses	44
Scaler hoses	45
TUBINGS	47
Foot control tubings	48
Syringe tubings	49
Vacuum tubings	50
Hookup tubings	52
3/4 hole tubings	53
INFECTION CONTROL	55
Systems	56
Bottles	57
Pressure head & hepa filter	58
COMPONENTS	59
Hp tubing adaptors	60
Foot controls	61
Syringes	63
Vacuum	64
HOLDERS & bars	67
Hangers	68
Pressure Gauges	69
Pressure regulators	70
Control Blocks	71
Valves	72
Quick disconnects	77
Fittings	78
Service parts	83





OUR MISSION

OUR VALUES

OUR DAILY COMMITMENT TO DENTAL CARE AND INNOVATION

G.Comm is an innovative company, focused on the production of components for dental units.

A company with 20-years experience in the production of dental lights and electric micromotors, **G.Comm** thanks to its know-how started producing and selling products with its own trade mark, reliable, high quality, competitive products for the well work of dentists and the well being of patients, always in total respect of sanitary regulations, hygienic conditions and environmental safety.

Together with dental lights and electric micromotors **G.Comm** supplies hundreds of components for dental units:

- monitor arms;
- tray arms;
- instruments hoses;
- tubings;
- vacuum tubings;
- pneumatic valves;
- infection control devices;
- foot control;
- syringes;
- pressure regulators;
- control blocks;
- electro-pneumatic boards and many others.





I "light" it

Business Philosophy

We do not seek merely to expand our business volume. Rather, we are dedicated to the use of our unique, innovative technologies to contribute to the dental care and well being of our customers. Our future prosperity is directly linked to the prosperity of our customers, dealers and shareholders...

The "*I light it*" philosophy has revolutionized the way to design and manufacture our products. The goal is to achieve a significant improvement of the dentist work, paying attention to the quality of light and protection of the environment.

Our daily commitment to customer care is the proof of our philosophy and from these ideals, we can get genuine satisfaction from our work, while making a meaningful contribution to society:

Quality is for us.... the result of care.

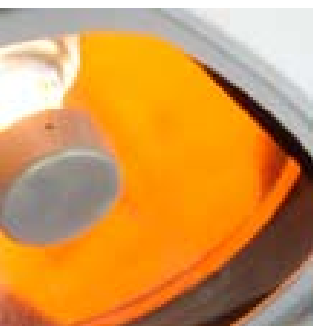
Accuracy is for us.... reaching the intended target.

Flexibility is for us.... thinking outside the box.

Design is for us.... the way to make our product unique.

Attention to details is for us.... to be aligned to customer expectations.

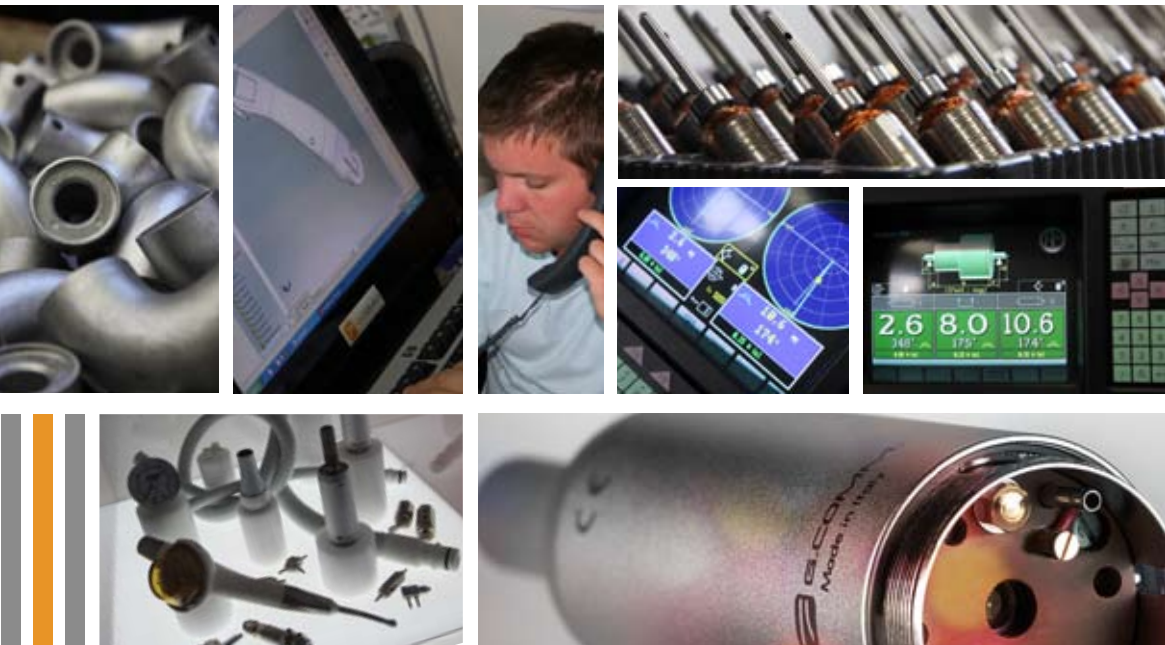




G.Comm will also design and create your custom product under specific, personal request to help find the best and finest solution to dental unit. A quality of production also testified by ISO 9001 and ISO 13485. Currently working with over 30 different countries, **G.Comm** is now determined to grow larger and experience new markets all around the world.



Our manufacturing process is based on strictly quality checking and procedure. Our R&D department is continuously collaborating with experts to respond promptly to the needs of the market.



G.Comm recognizes a strategic role in the after sale service. The fast and efficient delivery of spare parts and accessories, the availability of a clear and complete documentation are the ultimate confirmation of our commitment to customer care.

G.Comm has a wide range of products to support dental units manufacturers and dealers. By working with us you can take the advantage of a sole supplier with years of experience, rapidly growing all over the world.



DENTAL LED LIGHT





TECHNICAL FEATURES

Weight: 1,9 Kg (light arm not included)
 Power supply: 17-24 Vac
 Power consumption: 20W
 Dimension of Pattern: 70x140 mm
 Light Intensity: 8.000 - 35.000 lux
 Colour Temperature: 4.200-6.000 K
 Colour rendering index (CRI): >85

In conformity with directive:

93/42 CEE class 1

Applicable Norm: UNI EN ISO9680,

CEI_EN 60825-1;

CEI EN 60601-1; CEI EN 60601-1-2; UNI

CEI EN ISO 14971

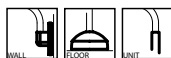
Technical features have a tolerance of +/- 10%


Available colours:

**RAL 9010, RAL 9006, RAL 9005,
 RAL 9016, RAL 9002, RAL 9003...**

** for more information about warranty see page 84

DENTAL LIGHT with arm 1470 mm (on request 1670 mm)



86710000	DENTAL LIGHT POLARIS SWITCH
86SM0000	DENTAL LIGHT POLARIS SENSOMATIC
86710000M3	DENTAL LIGHT POLARIS SWITCH, 3 rd AXIS Mov.
86SM0000M3	DENTAL LIGHT POLARIS SENSOMATIC, 3 rd AXIS Mov.
	
86660000	DENTAL LIGHT POLARIS SWITCH, FOR CEILING APPLICATION
86SC0000	DENTAL LIGHT POLARIS SENSOMATIC FOR CEILING APPLICATION
86660000M3	DENTAL LIGHT POLARIS SWITCH, FOR CEILING APPLICATION, 3 rd AXIS Mov.
86SC0000M3	DENTAL LIGHT POLARIS SENSOMATIC, 3 rd AXIS Mov., FOR CEILING APPLICATION
86H1000000	POLARIS LIGHT HEAD SWITCH
86H1100000	POLARIS LIGHT HEAD SENSOMATIC
86H2000000	POLARIS LIGHT HEAD SWITCH, 3 rd AXIS Mov.
86H2100000	POLARIS LIGHT HEAD SENSOMATIC, 3 rd AXIS Mov.



SPARE PARTS

86.H000.0003SP	LEDs assembly with dissipator including reflectors
86.E000.0017	Left Handle & Right Handle including handle cover 86.E000.0020
86.E000.0020	Handle Cover only
86.E000.0006	Protection screen

COLOUR TEMPERATURE REGULATION

through a regulation system (**G.Comm** patented) it is possible to adjust the colour temperature from 4.200 K to 6.000 K in order to improve the contrast on soft tissues.

LIGHT INTENSITY

it is possible to adjust illuminance from 8.000 to 35.000 lux, as a function of the specific application, reducing eyestrain.

SCIALITIC EFFECT

the clear geometry of reflectors, in combination with each LED source, allows to realize a luminous flux which is homogeneous, clean and without shadows.

LOW CONSUME and HIGH LIFETIME

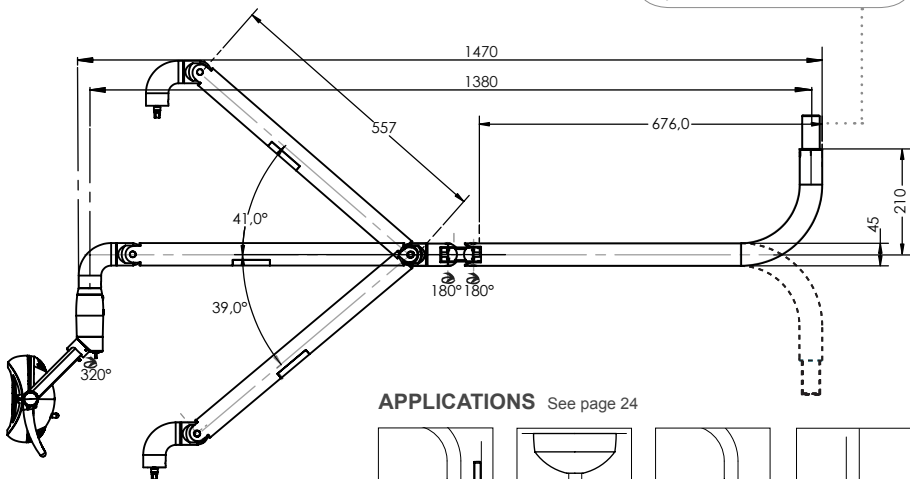
The low values of current and voltage (< 20 W), required to supply the light source, minimize the heat production, making the fan cooler not necessary. LED lifetime is higher than halogen light.

ABSENCE OF UV AND INFRARED RAYS

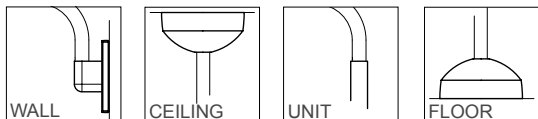
Polaris doesn't generate UV rays, dangerous for biological tissues.

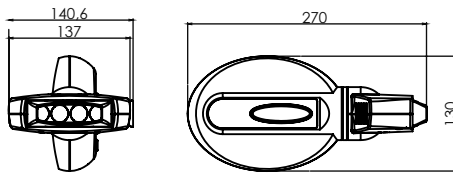
NOISE ABSENCE

ARM PIVOT:
standard size for unit mount
35mm, others sizes available on
request, call us for more information



APPLICATIONS See page 24





CORE WHITE

86.L100.0000	Core White only for Polaris
---------------------	-----------------------------

TECHNICAL FEATURES

Weight: approx. 800g
 Power supply: 17-24Vac
 Maximum power consumption: 30VA
 Current consumption: 1.5A
 Light pattern: 80x20mm
 Light source: 4LEDs (3.5W each)
 Emission spectrum: 420-480nm
 Maximum light power emitted: 2000mW
 Maximum distance from patient: 10cm

Core white is a bleaching light system easily to be applied directly to POLARIS removing a handle.

Through LED technology is possible to get the desired light intensity for different operation purposes.

No external supports, make the operation area free from any obstruction.



MIRROR AND FILTER

86.C102.0000	mirror and anti-polymerization filter kit
---------------------	---

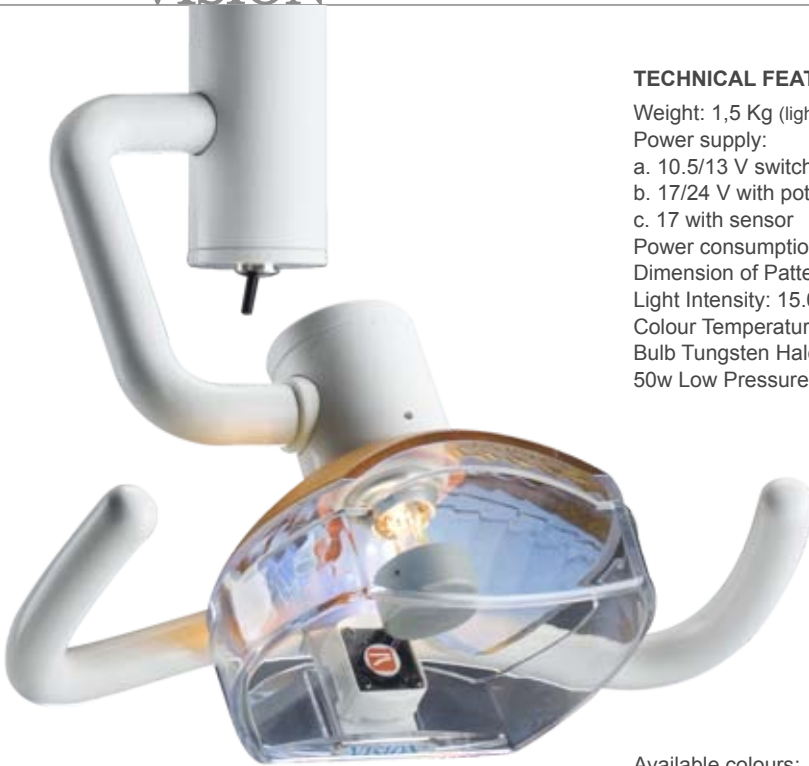
The need of a visual communication between operator and patient has lead to the creation of a pull-out MIRROR for POLARIS, allowing the patient to follow the treatment.

The ANTI-POLYMERIZATION FILTER is another example of kind attention towards the patient.

This filter is easily interchangeable with the MIRROR through a simple dap joint device. The purpose of this accessory is to reduce spectrum of light emission avoiding activation of the composite, even with the maximum light intensity.

DENTAL HALOGEN LIGHTS





TECHNICAL FEATURES

Weight: 1,5 Kg (light arm not included)

Power supply:

a. 10.5/13 V switch

b. 17/24 V with potentiometer

c. 17 with sensor

Power consumption: 50W

Dimension of Pattern: 100x200 mm

Light Intensity: 15.000 - 25.000 lux

Colour Temperature: 4.500 K

Bulb Tungsten Halogen Type: H-star 12v

50w Low Pressure

Available colours:

RAL 9010, RAL 9006, RAL 9005,

RAL 9016, RAL 9002, RAL 9003...

DENTAL LIGHT with arm 1470 mm (on request 1670 mm)



86480000 DENTAL LIGHT VISION SWITCH

86490000 DENTAL LIGHT VISION POTENTIOMETER

86670000 DENTAL LIGHT VISION SENSOMATIC



86510000 DENTAL LIGHT VISION SWITCH
FOR CEILING APPLICATION

86540000 DENTAL LIGHT VISION POTENTIOMETER
FOR CEILING APPLICATION

86690000 DENTAL LIGHT VISION SENSOMATIC
FOR CEILING APPLICATION

86050000 VISION LIGHT HEAD SWITCH

86010000 VISION LIGHT HEAD POTENTIOMETER

86060000 VISION LIGHT HEAD SENSOMATIC

SPARE PARTS

8601011/REV2	Bulb Holder
86010024	Bulb
86010117	Bulb holder cap
86010031	Reflector
86010063	Protection screen

ERGONOMY

Designed to be ergonomic and modern at the same time, our dental operating light Vision is also very easy to clean.

ITALIAN DESIGN

The operating light VISION it's on the market since 20 years, with excellent results.

REFLECTOR

Simple and functional, thanks to the coated reflector glass guarantees a light pattern without shadows and imperfections and a cold white light.

VERSIONS:

Switch



This model allows to choose the needed light intensity from 15000 to 25000 lux.

With potentiometer



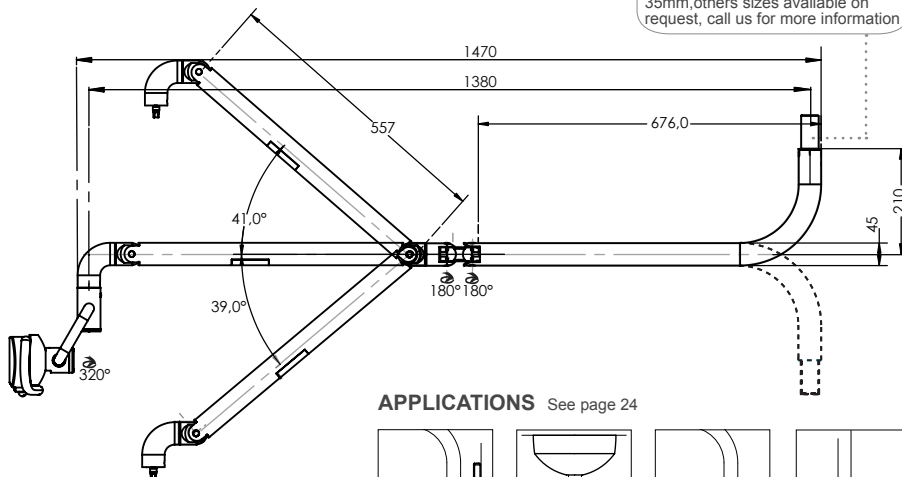
This model allows the progressive regulation between 15000 and 25000 lux.

Sensomatic

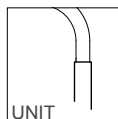
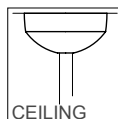
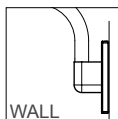


This model allows to switch on-off the light just passing one hand.

ARM PIVOT:
standard size for unit mount
35mm, others sizes available on
request, call us for more information



APPLICATIONS See page 24



**TECHNICAL FEATURES**

Weight: 1,6 Kg (light arm not included)

Power supply: 10.5/12 Vac

Power consumption: 50W

Dimension of Pattern: 70x140 mm

Light Intensity: 15.000 - 30.000 lux

Colour Temperature: 5.000 K

Bulb Tungsten Halogen Type: H-star 12v
50w Low Pressure

Available colours:

RAL 9010, RAL 9006, RAL 9005,

RAL 9016, RAL 9002, RAL 9003...

DENTAL LIGHT with arm 1470 mm (on request 1670 mm)**86700000**

DENTAL LIGHT ISA SWITCH

8670000M3DENTAL LIGHT ISA SWITCH 3rd AXIS Mov.**86300000**

DENTAL LIGHT ISA SWITCH FOR CEILING APPL.

8630000M3DENTAL LIGHT ISA SWITCH FOR CEILING APPL. 3rd AXIS Mov.**86E1000000**

ISA LIGHT HEAD WITH SWITCH

86E5000000ISA LIGHT HEAD 3rd AXIS Mov.

SPARE PARTS

8601011/REV2	Bulb Holder
86010024	Bulb
86010117	Bulb holder cap
86010031	Reflector
86.E000.0017	Left Handle & Right Handle including handle cover 86.E000.0020
86.E000.0020	Handle Cover
86.E000.0006	Protection screen

ITALIAN DESIGN

Smooth and simple lines as well as functional technical solutions.
Expression of a product Made in Italy.

REFLECTOR

New resin reflector, easy to clean and resistant to brakes.

HANDLES

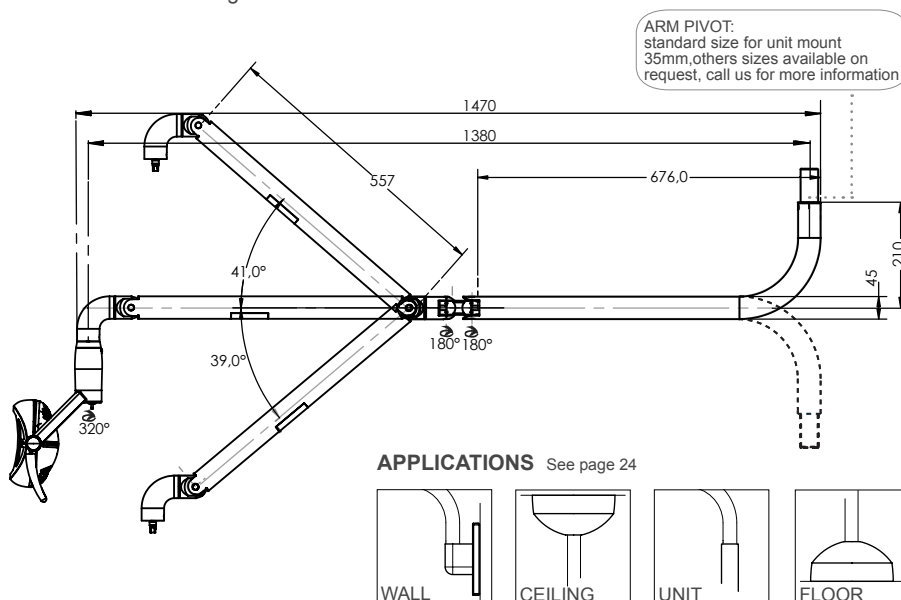
New quick disconnect autoclavable plastic handles.

MATERIAL

Isa operating light is entirely made in alluminium; its structure is very solid, resistant and does not wear-out after mechanical use.

PERFORMANCE

Isa assures high level illumination performances:
light intensity up to 30.000lux, well defined light pattern, colour temperature 5.000K°, colour rendering index >90.



**MIRROR AND FILTER**

86.C102.0000	mirror and anti-polymerization filter kit
---------------------	---

The need of a visual communication between operator and patient has lead to the creation of a pull-out MIRROR for ISA, allowing the patient to follow the treatment.

The ANTI-POLYMERIZATION FILTER is another example of kind attention towards the patient.

This filter is easily interchangeable with the MIRROR through a simple dap joint device.

The purpose of this accessory is to reduce spectrum of light emission avoiding activation of the composite, even with the maximum light intensity.

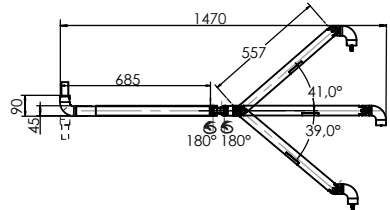
APPLICATIONS



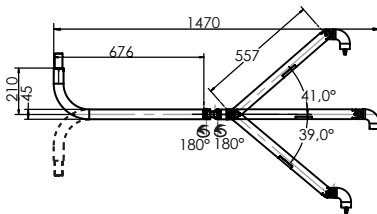
LIGHT ARM



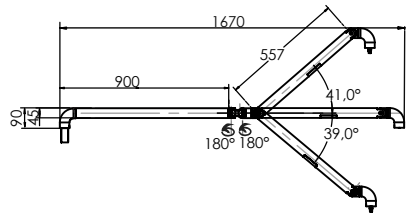
86460000/F	1470 mm unit standard arm
86570000	1470 mm ceiling standard arm



86460000P	1470 mm unit bended arm
86570000P	1470 mm ceiling bended arm



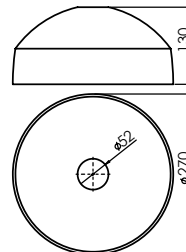
86460000FL	1670 mm unit long arm
-------------------	--------------------------



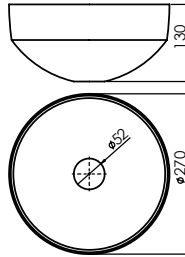
FLOOR APPLICATION



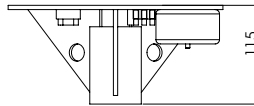
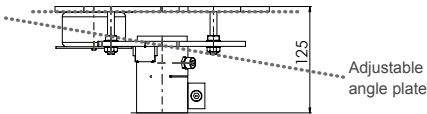
82120010	floor application
82120001	floor column



CEILING APPLICATION



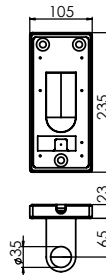
82100005/12V	ceiling application with transformer 12V included
82100005/24V	ceiling application with transformer 24V included (polaris version)
82100011/12V	ceiling application with adjustable plates and transformer 12V included
82100011/24V	ceiling application with adjustable plates and transformer 24V included (polaris version)
82110001	ceiling column Ø=50mm L=135cm
82110002	ceiling column Ø=50mm L=165cm



82100011	ceiling application with adjustable plates without transformer
-----------------	--

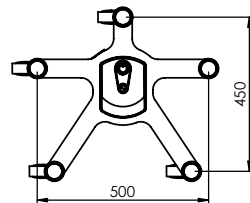
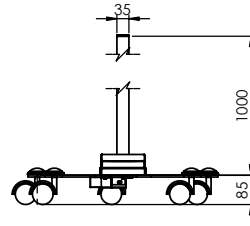
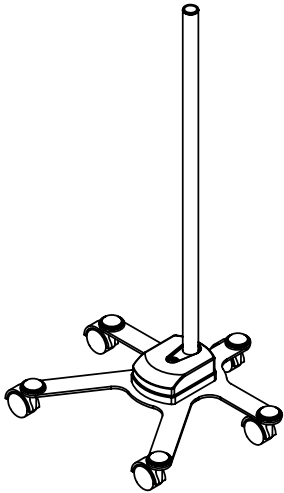
82100005	ceiling application standard without transformer
-----------------	--

WALL APPLICATION



82090000	wall mount (235mm x 105mm)
39010007	transformer 230/12V





TROLLEY APPLICATION

83010000 | trolley on 5 wheels
Including: pole h=1000 mm - Transformer 230 Vac



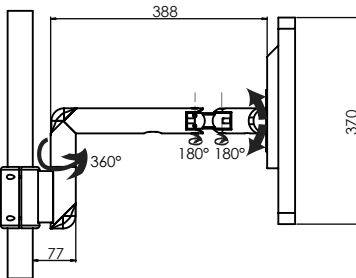
ARMS & SUPPORTS



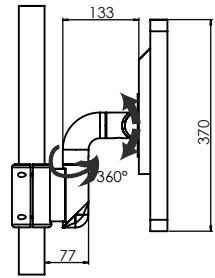


Complete SVGA cable
for monitor arm:

- 87010023** | lenght 5 mt
- 87010028** | lenght 10 mt



- 87010000** | monitor arm complete with SVGA, video and power supply cable
- 87010000/NC** | monitor arm without cable

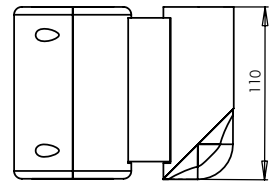
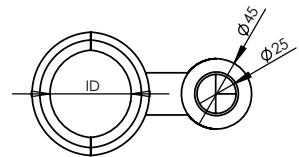


- 87030000** | short monitor arm complete with SVGA, video and power supply cable
- 87030000/NC** | short monitor arm without cable

MONITOR ARM CLAMPS

Available in the following diameters:

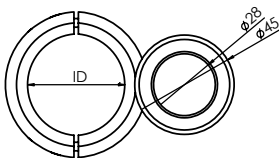
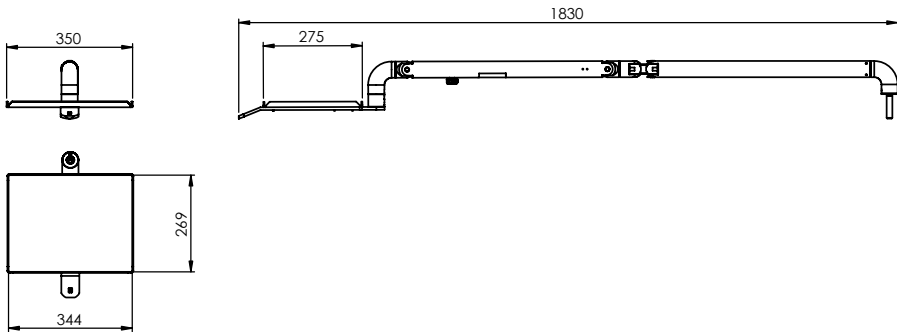
- 87010013** | clamp ID 45mm
- 87010014** | clamp ID 50 mm
- 87010022** | clamp ID 55 mm
- 87010036** | clamp ID 60 mm
- 87010043** | rubber clamp shim





87E000000	tray arm with table
86150009	tray table (368x286mm)

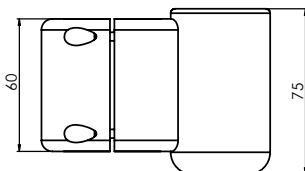
G.Comm tray arm is made to support dental instruments and holding trays. It's provided with a balanced movement on the vertical axis and a locking system that allows a steady positioning at the desired height.



TRAY ARM CLAMPS

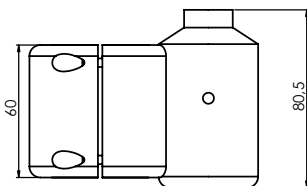
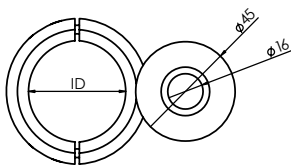
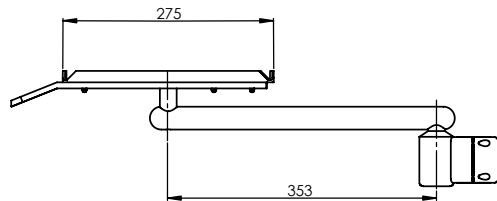
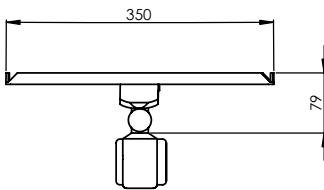
Available in the following diameters:

86150080	clamp ID 45 mm
86150081	clamp ID 50 mm
86150086	clamp ID 55 mm
86150082	clamp ID 60 mm



86150066 | assistant tray arm

G.Comm assistant tray arm is made to support dental instruments and holding trays.

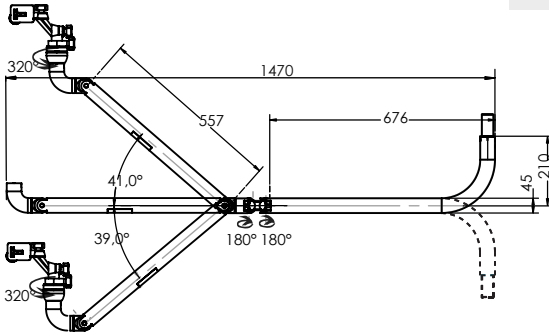


TRAY ASSISTANT CLAMPS

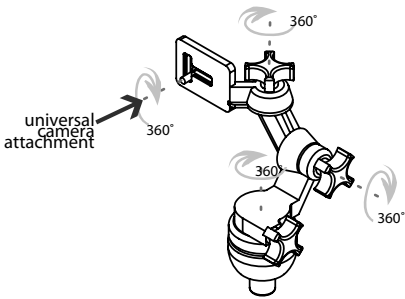
Available in the following diameters:

86150064	clamp ID 45mm
86150065	clamp ID 50 mm
86150089	clamp ID 55 mm
86150072	clamp ID 60 mm

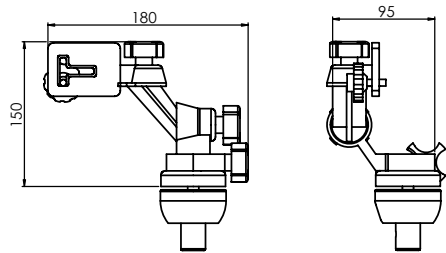
87.C100.0000 | videocamera arm with cable kit



DEGREES OF MOTION



TECHNICAL DIMENSIONS



MONITOR TFT LCD (15" & 17") WITH VIDEO-IN, 12 V



TECHNICAL FEATURES

- SXGA 1280 x 1024 resolution
- Durable metal casing
- High 3000:1 dynamic contrast ratio
- S-Video, composite, analogue, digital inputs
- EN60601-1 medical certification
- Equipotential Terminal safety standard
- Optional handle allows for easy movement of display
- Auto-adjustment for optimal settings
- Kensington® security socket
- VESA standard mount 100 mm

SUPPLIED ACCESSORIES

- quick guide
- CD ROM (user manual and drivers)
- 15-Pin D-Sub cable
- 24-Pin DVI cable
- S-Video cable
- CVBS cable
- AC power cord 1.8 m
- DC power cord 5 m
- power adaptor

87500015	monitor 15" with standard vesa mounting
87500017	monitor 17" with standard vesa mounting
87500017DR	monitor 17" with standard vesa-mounting, medical certification

Available in black and white colour.



ELECTRIC MICROMOTORS

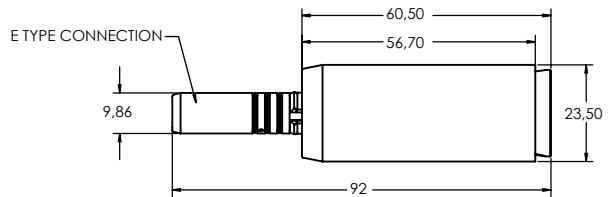




TECHNICAL FEATURES

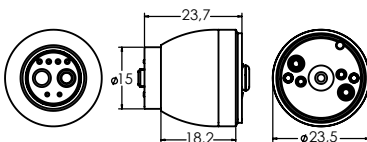
Weight: 85 g
 Power supply: 2,5/24 Vac
 Maximum current: 3A
 Speed: 10000-40000 RPM +/- 10%
 Dimension: external diam. 23,5 mm,
 length 57 mm

E type connection with x-tra resistant treatment.
 External autoclavable sleeve.
 High quality materials are applied to guarantee high performances and make our micromotors very reliable.
 Socket fits B-A micromotor



60130000	micromotor ST40 external spray 40.000 RPM
60140000	micromotor ST40I intramatic 40.000 RPM
60110000	micromotor ST40IL intralux 40.000 RPM with led light

ADAPTOR MC2/MC3

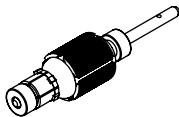


The adaptor micromotor to turbine tubing allows the connection between **G.Comm** micromotors or any other micromotor with MC2 B-A compatible connection to a turbine/micromotor tubing (MC3 tubing or similar). This product is a **G.Comm** Patent.

60060000	adaptor MC2/MC3
-----------------	-----------------

SPARE PARTS

60110069 | rotor



60110056 | bearing



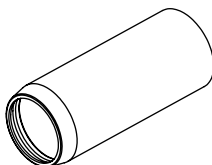
60110013 | bulb



60010026 | brush



60110016 | external sleeve



MICROMOTOR INSTALLATION KIT

Electric Micromotors

INSTALLATION KIT INCLUDING MICROMOTOR WITH LIGHT, HOSE,
ELECTRONIC CONTROL WITH ELECTRO-PNEUMATIC CONVERTER AND POTENTIOMETER



CMG01	electronic board for micromotor with light & electro-pneumatic converter
601*0000	micromotor ST40
07090005	potentiometer
121*0417	micromotor hose intramatic with or without light

INSTALLATION KIT INCLUDING MICROMOTOR WITH LIGHT, HOSE,
ELECTRONIC CONTROL AND POTENTIOMETER



601*0000	micromotor ST40
50040032/REV1.1	light electronic board 3 instr. with pneu-switch
50040030	electronic board for micromotor
121*0417	micromotor hose intramatic with light
07090005	potentiometer

ELECTRONIC BOARDS





CMG01 board allows a gradual and progressive speed control of electric micromotors ST40 using drive air from foot control.

Integrates the control of the optical fiber and a current control for better management of micromotor torque.

TECHNICAL FEATURES

Weight: approx 250g

Attack: MOUNTING DIN Rail

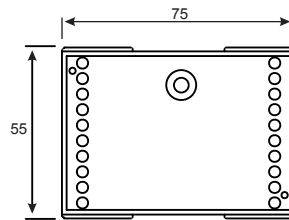
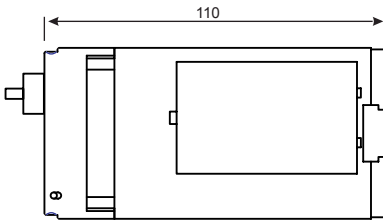
Power supply: 24 Vac

Transport and stocking

temperature: from -25° C to +70 ° C

Relative humidity: from 10% to 70%

CMG01 | electronic board for micromotor with light & electro-pneumatic converter



It allows a gradual and progressive speed control of electric micromotors ST40 by a potentiometer (not included)

50040030 | electronic board for micromotor

LIGHT ELECTRONIC BOARDS



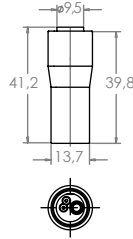
Electronic board allows to manage up to 3 fiber optics instruments.

50040032/REV1.1 | light electronic board 3 instr. with pneu-switch

INSTRUMENT HOSES



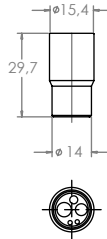
BORDEN HOSE



11110717	black
11120717	white
11150717	grey

Instrument hose with silicon sleeve and high quality polyurethane tubing

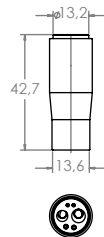
MIDWEST HOSE



11110417	black
11120417	white
11150417	grey

Instrument hose with silicon sleeve and high quality polyurethane tubing

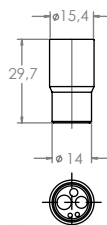
MIDWEST HOSE WITH LIGHT



11110317	black
11120317	white
11150317	grey

Instrument hose with silicon sleeve and high quality polyurethane tubing

TURBINE HOSE 4HOLE STRAIGHT ASEPTIC ULTRAFLEX



T1741	4hole straight aseptic ultraflex
--------------	----------------------------------

T1725	4hole straight aseptic
--------------	------------------------

T1729	4hole straight standard
--------------	-------------------------

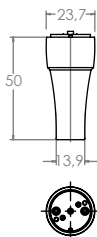
T1727	3hole straight aseptic
--------------	------------------------

T1731	3hole straight standard
--------------	-------------------------

See the differences between standard & aseptic at page 48



INTRAMATIC MICROMOTOR HOSE



12110217 black

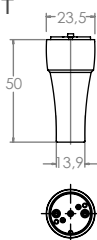
12120217 white

12150217 grey

Instrument hose with silicon sleeve and high quality polyurethane tubing

Compatible with BienAir®

MICROMOTOR HOSE INTRAMATIC WITH LIGHT



12110417 black

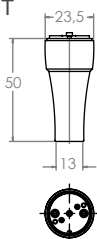
12120417 white

12150417 grey

Instrument hose with silicon sleeve and high quality polyurethane tubing

Compatible with BienAir®

MICROMOTOR HOSE INTRAMATIC WITH LIGHT AND SWIVEL



12110817 black

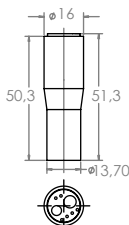
12120817 white

12150817 grey

Instrument hose with silicon sleeve and high quality polyurethane tubing

Compatible with BienAir®

MICROMOTOR/TURBINE HOSE WITH LIGHT



11110517 black

11120517 white

11150517 grey

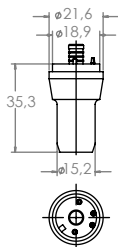
Instrument hose with silicon sleeve and high quality polyurethane tubing

Compatible with BienAir® MC3

* BienAir® is a registered trademark



K190-196 MICROMOTOR HOSE

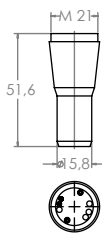


13110117	black
13120117	white
13150117	grey

Instrument hose with silicon sleeve and high quality polyurethane tubing

Compatible with Kavo® 190/196

K192 MICROMOTOR HOSE



13110317	black
13120317	white
13150317	grey

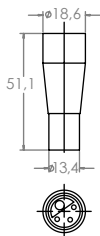
Instrument hose with silicon sleeve and high quality polyurethane tubing

Compatible with Kavo® 192

* Kavo® is a registered trademark



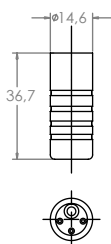
SATELEC SCALER HOSE



ABLSATNR	black
ABLSATBC	white
ABLSATGR	grey

Instrument hose with silicon sleeve and high quality polyurethane tubing

EMS SCALER HOSE



ABLEMSNR	black
ABLEMSBC	white
ABLEMSGR	grey

Instrument hose with silicon sleeve and high quality polyurethane tubing

TUBINGS



ASEPTIC



T1750G | foot control tubing 4hole aseptic

T1752G | foot control tubing 2hole aseptic

STANDARD



T1754G | foot control tubing 4hole standard

T1757G | foot control tubing 2hole standard



ASEPTIC



T1759G | syringe tubing 2hole
aseptic

STANDARD



T1765G | syringe tubing 3hole
standard grey

DOUBLE WALL PVC VACUUM TUBING WITH INTERNAL SPIRAL



98801508	8 mm grey
98801511	11 mm grey
98801515	15 mm grey
98801517	17 mm grey

ULTRAFLEX VACUUM TUBING



9880130850	8 mm, roll of 50 mt
9880131150	11 mm, 50 mt
9880131550	15 mm, 50 mt
9880131118	11 mm, length 1,8 mt
9880131718	17 mm, length 1,8 mt

ISOTRON / ISOPLUS



90043316	17 mm, length 2,00 mt with suction tips
90043308	8 mm, length 2,00 mt with suction tips

ABSOLUTE



90042215	17 mm, length 2,00 mt with suction tips
90042208	8 mm, length 2,00 mt with suction tips

VACUUM TUBING



- T1743G** | 1/2" vacuum tubing
- T1744G** | 5/8" vacuum tubing

1/2" ASEPTIC GEOMETRIC VACUUM TUBING



- T1796G** | 1/2" aseptic geometric vacuum tubing

3/16" SALIVA EJECTOR TUBING



- T1775G** | 3/16" saliva ejector tubing grey

1/8" HOOKUP TUBING



T1702	hookup tubing 1/8" blue
T1703	hookup tubing 1/8" clear
T1704	hookup tubing 1/8" green

1/4" HOOKUP TUBING



T1802	hookup tubing 1/4" blue
T1803	hookup tubing 1/4" clear
T1804	hookup tubing 1/4" green

3/8" HOOKUP TUBING



T1902	hookup tubing 3/8" blue
T1903	hookup tubing 3/8" clear
T1904	hookup tubing 3/8" green



3/4HOLE TUBINGS



T1777G	4hole aseptic straight HP tubing
T1779G	3hole aseptic straight HP tubing
T1785G	4hole aseptic ultraflex straight HP tubing



INFECTION CONTROL





C1805 1L | clean water disinfectant system 1 L

Includes regulator, selector and on-off toggles; selector toggle changes from city water to bottle fluid; 2" post clamp and flat surface clamp included.



C1805 1,5L | clean water disinfectant system 1,5 L

Includes regulator, selector and on-off toggles; selector toggle changes from city water to bottle fluid; 2" post clamp and flat surface clamp included.



C1807 1,5L | twin clean water disinfectant system 1,5 L

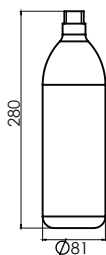
Flushes water lines with disinfectant and re-introduces clean water to lines; 2" post clamp and flat surface clamps included; available with 1 lt or 1,5 lt heavy duty bottle.





2000-500 | mint - a - kleen case of
10 bottles 500 ml

Mint-A-Kleen is a light blue, mint flavoured, anti-microbial solution for use in operative, scaling procedures and cleaning dental unit's waterlines.



P1811 1 L | 1 L water bottle x-tra
heavy duty

TECHNICAL FEATURES

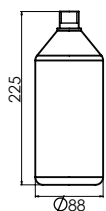
Material: HDPE/ High Density Polyethylene
Weight: 30g
Colour: Opaque White
Pressure usage range: 2.6 - 4 Bar
Max pressure: 5.5 Bar



P1811 1,5 L | 1,5 L water bottle
x-tra heavy duty

TECHNICAL FEATURES

Material: HDPE/ High Density Polyethylene
Weight: 43g
Colour: Opaque White
Pressure usage range: 2.6 - 4 Bar
Max pressure: 5.5 Bar



P1811/T | 1 L clear blue water bottle

TECHNICAL FEATURES

Material: PET (RAMAPET VORCALOR 9921W)
Colour: Clear Blue
Weight: 53g
Capacity: 1000ml
Max pressure: 2.6 Bar

The dimensions of the bottles are subject to possible change.



PRESSURE HEAD & HEPA FILTER

Infection control



92010001	assembled pressure head
R-C1804-1B	replacement gasket for water bottle



C2690	single hepa filter
C2691	manifold for hepa filter
C2690-91	hepa filter with manifold



COMPONENTS





P1827 | 2-3hole HP to 4hole tubing adaptor

Adapts 2 or 3-hole HP to 4-hole HP tubing



P1831 | 4hole HP to 3hole tubing adaptor

Adapts 4-hole HP to 3-hole HP tubing



STANDARD



F1200 | standard foot control

- Precision-touch disc foot control
- Weighted for maximum stability
- Durable chrome steel dome
- Smooth, variable pressure control
- Non-skid foot pads

WET / DRY



F1210 | wet/dry foot control

V1550 | replacement toggle

- Precision-touch disc foot control with wet/dry toggle
- Weighted for maximum stability
- Durable chrome steel dome
- Smooth, variable pressure control
- Non-skid foot pads

WET / DRY WITH CHIP



F1215 | wet/dry foot control with chip button

F1231 | replacement toggle assembly

F1232 | replacement 2-way button assembly

V1550 | replacement toggle

REPAIR KIT



F1201 | main valve repair kit

F1225 | foot control repair kit

F1229 | toggle valve repair kit

F1230 | chip button repair kit



F1231 | replacement toggle assembly



F1232 | replacement 2-way button assembly

- Assembled, ready to use





C1610	continental syringe
C1610SL	continental syringe with silicone tubing 1,7 metres



C1600	contour syringe
C1600 SL	contour syringe with silicone tubing
C1600 SG	contour syringe with 7' grey tubing 1,7 metres



C1601	threaded syringe button
C1602	repair kit
C1603	locking syringe nut kits



C1624	autoclavable syringe tip
--------------	--------------------------



S1105 | standard autoclavable
Q.D. HVE

- Smooth lever action
- Single piece ultra-smooth body
- Long lasting Viton O-rings
- Anodized aluminum finish
- Lightweight swivel quick-disconnect
- Fits large-bore HVE hangers



S1200 | saliva ejector autoclavable
Q.D.

- Smooth lever action
- Long lasting Viton- O-rings
- Single piece ultra-smooth body
- Anodized aluminum finish
- Lightweight swivel quick-disconnect
- Tapered base fits all syringe & auto hangers



S1360G | rotary saliva ejector

- Traditional rotary on/off
- Accepts plastic or metal screen
- Removable push-on tip
- Easy to disassemble for cleaning



S1340G | universal lever HVE

- Lightweight comfortable body
- Hangs by tip in syringe hangers
- Easy to disassemble for cleaning



S1397 | saliva ejector tip grey
autoclavable

S1396 | saliva ejector tip black
autoclavable

- Push-on, autoclavable, Grey
- Push-on, autoclavable, Black



S1202 | autoclavable SE,
no shut-off

- Use for auto-hanger vacuum installations
- Same great features as S-1200, less lever valve



S1361 | SE screen

- Disposable plastic



V1103 | HVE replacement lever

V1203 | SE replacement lever

- Snaps in place
- Fits all anodized aluminum SE & HVE valves



S1390 | suction/drainline prefilter

- Use to remove heavy debris from suction or drain line
- Easy to clean stainless screen
- Exchangeable 5/8" barb inlet/outlet



S1390-2 | replacement screen

- Fits all vacuum drain kits
- Direct replacement for S-1390
- Woven stainless steel
- 1" diameter x 1-3/8" long



V1605 | air-water saliva ejector venturi

- Plated brass construction
- Serviceable Venturi



V1610 | air vacuum venturi for HVE and SE

- Venturi only
- Plated brass construction



H1090 | 4 position holder bar

- One-piece design, easy to mount
- Holds four universal instruments
- 1-3/16" between mounting holes



H1096 | flush mount hanger bar

- One-piece design, easy to mount
- 14" universal



H1000G | standard handpiece hanger, no lockout

H1000GL | standard handpiece hanger with lockout

- Fits 1/2" diameter hanger bars
- Normally closed
- With or without lockout toggle
- Aluminum back



H1010G | standard syringe hanger

- Fits 1/2" diameter hanger bars
- Holds syringe, SE or Universal HVE
- Aluminum back



V1524 | air electric switch n.o.

V1525 | air electric switch n.c.

- Air activated electric switch, 4 PSI cracking pressure
- 10-32 port - 1/16" exchangeable fitting
- Normally open or closed





C1840T | 1" gauge 0-60 PSI

- 1" round face
- 10-32 female port
- Suitable for air or water service



C2610 | handpiece in-line gauge

- Connects in-line for accurate measurements
- Ranges from 0-160 PSI
- 5-hole Midwest connectors

PRESSURE REGULATORS Components



C1835 | mini air-water regulator

- Mini regulator with 10-32 outlet



C1844 | mini fixed in-line regulator

- Mini fixed regulator
- Non-relieving 35 PSI output
- Rated input from 35-150 PSI
- 1/16" barbed fittings



90030010 | air pressure regulator

90030020 | water pressure regulator





90020057 | electro-pneumatic block
2 instruments 24V DC

- Available from 1 to 4 blocks



90050016 | control blocks 2
instruments

- Control blocks for 2 handpieces
- Solid brass construction
- Buna inter-woven diaphragm
- High flow and wearing-proof design



V1842 | 3HP automatic control
block

R-V1842-3 | drive air flow control

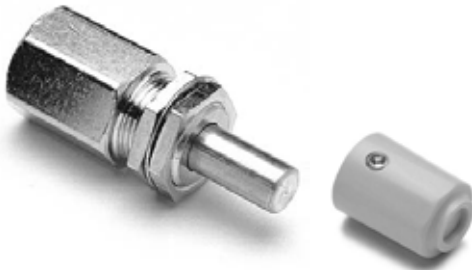
R-V1842-5 | replacement diaphragm

- Mini control blocks for 3 or 4 handpieces
- Solid brass construction
- Extra mounting holes allow a variety of placements
- 10-32 threaded barbs
- Longest lasting inter-woven diaphragm
- High flow design



V1506-2	on-off toggle valve 2way
V1506-3	on-off toggle valve 3way
V1507-2G	momentary toggle valve 2way

- All brass body and valve
- Tough, flexible toggle
- Available in Grey or Black
- Choose from 2 or 3 way



V1511G	needle flow control with knob
V1513G	knob for RV1511



90010079	needle flow control with knob
90010078	needle flow control without knob



V1514	mini flow restrictor
--------------	----------------------

- Variable restriction of air or fluids
- Pass-thru accepts 1/8" or 1/4" hookup tubing



V1515G | routing toggle valve

- 2-way valve routes air or water



V1516 | air actuated on-off valve
2way n.c.

V1517 | air actuated on-off valve
2way n.o.

V1518 | air actuated on-off valve
3way n.c.

- Activated by an air signal
- 2 or 3-way
- Normally open or closed



V1519 | check valve

- Solid brass
- 2.5 PSI cracking pressure
- Air or water use



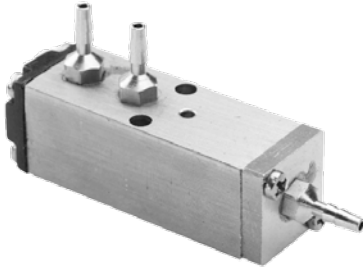
V1520 | shuttle valve

- Nickel plated brass
- Air or water use
- High pressure inlet blocks lower pressure inlet
- 1/16" barbed fittings



V1521 | flow adjustment manifold

- 10-32 ports, 1/8" or 1/4" fittings
- Manages air and/or water flow
- Nickel plated brass
- Perfect for syringes



90050010 | water non-retracting valve



V1523 | visual indicator

- Air activated color pressure indicator
- Red or green indicator options
- Attractive grey panel mount
- 10-32 port



V1526 | in-line filter

- 35 micron filter disc
- 1/8" FPT ports



V1527 | mini in-line filter disc

- 35 micron filter disc
- Use for V-1526 and other mini filters
- Measures 7/8" x 1/16"



V1528 | pinch water valve

- No metal to water contact
- Simple to maintain
- Replaces OEM unit water valves
- 1/16" barbed signal fitting



V1529 | flex valve

- Drive-air Pinch-style valve
- Direct replacement for Ampco® units
- Accepts 1 x 1/4" & 3 x 1/8" tubes



V1531 | air activated routing valve

- Air-signal actuated-no toggle
- All brass body and valve
- 2-Way valve for air or water service



V1570 | water valve

- Mini water valve
- Positive shut-off, 2-way
- Non-retracting
- Plated brass



V1805 | water retraction relay

- Air activated water retraction
- 10-32 ports



V1530 | filter for air or water

- Replaceable filter element
- 1/8" female/male ports



V1601 | mini auto shut-off/filter assembly

- Complete Shut-off/ filter pack for air or water service
- Includes filter with replaceable element
- 1/8" FPT outlet
- Connects directly to angle stop



V1602 | master Auto Shut-off Valve

- Auto shut-off for air or water service
- Solid brass construction
- 10-32 inlet and outlet



P1068 | 1/4" female quick disconnect with shut-off

P1691 | 3/8" female quick disconnect with shut-off

- Panel mount with auto shut-off
- 1/4" or 3/8" Poly-flow rear connection
- Chrome plated brass



P1070 AS | 1/4" male quick disconnect with shut-off

P1692 | 3/8" male quick disconnect with shut-off

- With auto shut-off
- 1/4" or 3/8" Poly-flow rear connection
- Chrome plated brass



90010087 | 1/16" 10-32 brass barb



90010088 | 1/8" 10-32 brass barb



P1054 | brass hex plug 10-32



P1055 | nylon washer 10-32





P1056 | plastic tee 1/16"

P1057 | plastic tee 1/8"

- Bio-medical grade plastic



P1058 | plastic inter connector 1/16"

P1059 | plastic inter connector 1/8"

P1761 | plastic inter connector
1/8" x 1/16"

- Bio-medical grade plastic



P1850 | plastic "Y" connector 1/16"

P1852 | plastic "Y" connector 1/18"

- Bio-medical grade nylon
- 1/16" or 1/8" configurations



P1854 | plastic elbow 1/16"

P1856 | plastic elbow 1/8"

- Bio-medical grade nylon
- 1/16" or 1/8" x 10-32



P1875 | 1/16" plated brass tee

P1876 | 1/8" tee

- Plated Brass



P1877 | mini quick disconnects 1/16"

P1878 | mini quick disconnects 1/8"

- Plated Brass



P1062 | tubing collar 1/4"

92020000 | tubing collar 1/8"



P1076 | 1/16" x 1/8" 10-32 stepped barb

- Plated brass
- Allows hookup flexibility
- Use for portable equipment hookup fitting



P1686 | plated brass barb 1/16" x 1/16"

P1687 | plated brass barb 1/8" x 1/8"

P1688 | plated brass barb 1/8" x 1/16"

- Plated Brass



P1760 | plastic tee 1/16" x 1/8" x 1/16"

P1762 | plastic tee 1/8" x 1/16" x 1/8"

- Bio-medical grade plastic



P1770 | adaptor connector

- 1/8" X 10-32



P1815 | brass cross

- 10-32 Female ports
- Plated



P1820 | brass tee

- 10-32 Female ports
- Plated



P1825 | 4 hole tubing connector

- Handy for extending HP or Foot Control Tubing
- Plastic body with brass barbs



O-2300 | o-ring kit

- Strong plastic divided case
- Over 100 O-rings in common sizes
- Replacement packages of 10 pcs
- 10 o-rings of each size
- Includes sizes 001-012

SALE CONDITIONS

GENERAL TERMS OF SALE:

INTRODUCTION

The business relationship between **G.Comm** and the customer are governed exclusively by the following terms of sale which supersede and exclude all other previous or verbal agreement.

LIABILITY

G.Comm, except in cases of wilful misconduct or gross negligence, shall not be liable for any direct or indirect loss or damage resulting from late or non delivery of the product, nor for the non-correspondence of goods to the specifications published in the catalogue, or for any other reasons not attributable to **G.Comm**.

TECHNICAL INFORMATION

The technical information printed in the catalogue is based exclusively on official data published by manufacturers.

We reserve the right to change technical parameters based on the information submitted by manufacturers.

ORDERS

Orders will be processed according to customer requirements.

Any alternatives to the requested product will be provided only after notice has been given to the customer and his approval has been received.

RISK AND OWNERSHIP

Goods are shipped freight collect or with freight charges on the invoice and therefore the risk will pass to the customer upon delivery to the carrier.

Always check the integrity of packaging at the time of receipt of goods.

RIGHT OF WITHDRAWAL

As required by Legislative Decree N.50 of January 15, 1992, customers who are individuals making a purchase with a value higher than 25 Euro, including taxes and charges, for purposes that are unrelated to his professional activities, have the right to terminate the contract.

Customers who wish to exercise the right of withdrawal must send written notice within 7 days of the receipt of goods.

The integrity of products and packaging is an essential condition for the application of the right of withdrawal.

Goods must be returned within 7 days of its receipt from our warehouse. Shipping costs shall be borne by the customer. **G.Comm** shall return any money already paid by the customer, except for any incidental costs.



SALE CONDITIONS

RETURNING GOODS

Material returns must be reported in advance with detailed explanation of the reasons and citing references in the transport document. Wait for a return authorisation number. Products must be returned undamaged and properly packaged. The transport document and the packaging label must carry the return authorisation number.

Goods must be returned carriage paid. Products returned without meeting the above requirements will be rejected and returned to the sender freight collect.

Reporting of data processing pursuant to Art. 13 of Leg. Decree N.196/2003 Pursuant to Legislative Decree 196/2003, **G.Comm** communicates with reference to the holder of the qualification of data as follows:

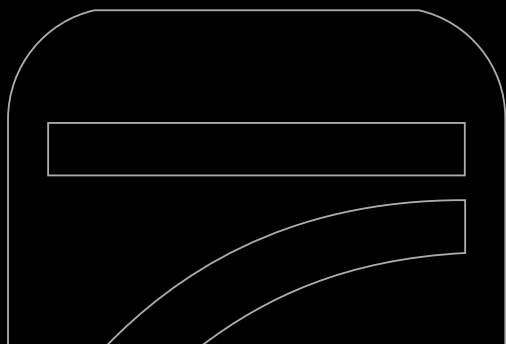
The acquisition and processing of personal customer data are required in order to process your order request.

In relation to the stated purposes, the processing of your personal data shall be done through manual, computerised or telematic tools, with logic strictly related to the purposes and in any event to ensure the security and confidentiality of data.

Art. 7 of Legislative Decree 196/2003 gives the customer specific rights. In particular, customers have the right to confirmation of the existence of personal data and to prevent this from being made available in any intelligible form. Customers may also ask to know the origin of the data and the logic and purposes upon which it is processed, to obtain the cancellation, transformation into anonymous form or blocking of data handled in violation of the law, as well as updating, correction or, if interested, integration of data, to oppose, for legitimate reasons, the treatment itself.

The customer's personal information will not be disclosed. With prior consent in writing only, data will be communicated to banks for the making of payments by bank draft.





WWW.GCOMM-ONLINE.COM